

EARNEST HOUSE



EARNEST JOHN
Group of Companies

ultra modern
business district





EARREST JOHN
Group of Companies

EARREST HOUSE architecture speaks for itself. It represents an innovative concept in Office Building Design. Every facet from the Architectural and Planning point of view have been meticulously studied and analyzed in every detail to create a building that combines beauty with utility and there-by offers a comfortable working space.

The building as you may well see has a beautiful, unique and very functional shape. It offers a sprawling 14,000 sq. ft. of office space on the first floor and 10,000 sq. ft. on the typical upper floors. The facade has an imposing treatment in load-bearing concrete louvers, which will protect the facade from sun & rain and their repetitive character and well proportioned design gives the building a unique look and character.



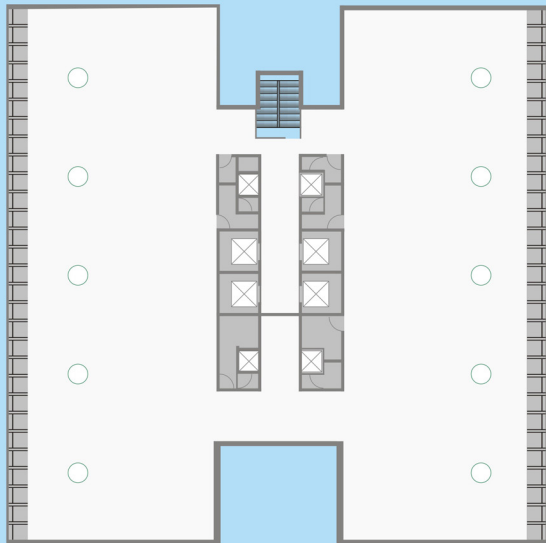
EARNEST JOHN & COMPANY LIMITED is a member of the larger conglomerate EARNEST JOHN GROUP of companies. The Group has been in existence since 1925 and has successfully ventured into multifarious activities in Pharmaceuticals, Real Estate, Property Development, Shipping, Exports, Infrastructure and Information Technology.

Landscaping the panoramic beauty, the headquarters is located at EARNEST HOUSE a very prestigious building, promoted and owned by the group, in the heart of the business center at Nariman Point, Mumbai, Laced by the waves of the Arabian Sea.

The dynamic and growth oriented group is headed by the charismatic Chairman, Mr. CHRISTOPHER JOHN. The management is handled by Dr. EARNEST JOSEPH JOHN II and monitored by the Management Board consisting of highly qualified and experienced professionals in various disciplines. The day to day activities of the organization are professionally managed by a highly motivated and cohesive team of competent personnel, committed to the organization's mission.

EARNEST HOUSE

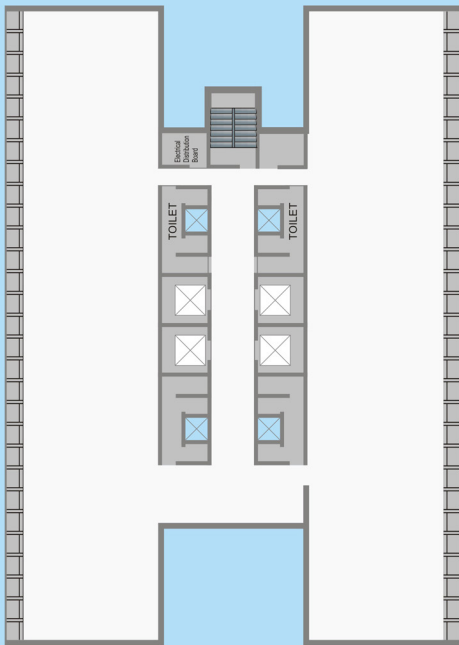
FLOOR PLAN LAYOUT - 4th FLOOR



4th Floor - Built Up Area - 12,000 sq.ft.

EARNEST HOUSE

FLOOR PLAN LAYOUT - 12th FLOOR



12th Floor - Built Up Area - 10,000 sq.ft.

